

3. Educational program

Profile of the educational program in the specialty 053 "Psychology" (specialization "Psychology"), guarantor, associate professor of psychology Skripkin O.G.

1 – General information	
Full name of the institution of higher education and structural subdivision	Kyiv National University of Trade and Economics; Faculty of Economics, Management and Psychology; Department of Psychology
Degree of higher education and title of qualification in the original language	Master's degree Specialty "Psychology" Specialization "Psychology"
The official name of the educational program	«Psychology»
Type of diploma and scope of educational program	Master's degree, single 90 ECTS credits term of study 1 year 4 months
Availability of accreditation	Ministry of Education and Science of Ukraine, Ukraine, until 01.07. 2022
Cycle / level	NCF of Ukraine - level 7 FQ-EHEA -the second cycle EQF-LLL - level 7
Prerequisites	- bachelor's degree; - conditions of admission to the program are regulated by the Rules of admission to KNUTE
Language (s) of teaching	Ukrainian
Term of the educational program	until 01.07. 2022
Internet address of the permanent placement of the description of the educational program	https://knute.edu.ua/
2 – The purpose of the educational program	
The program is aimed at mastering general and special competencies in order to provide psychological support for professional activities in normal and crisis conditions, taking into account universal values and norms of professional ethics of a psychologist.	
3 - Characteristics of the educational program	
Subject area (field of knowledge, specialty, specialization (if available))	Field of knowledge 05 "Social and behavioral sciences" specialty 053 "Psychology" specialization "Psychology"

Orientation of the educational program	Educational and professional. Emphasis is placed on thorough fundamental training of specialists in the field of practical psychology.
The main focus of the educational program and specialization	The program is characterized by two meaningful vectors: fundamental training in academic psychology; mastering the skills of practical work in the chosen field of specialization: organizational, social, crisis, clinical, etc. Key words: psychology, psychological assistance, crisis situations, stress resistance, conflict.
Features of the program	Interdisciplinary and multidisciplinary training of specialists in psychology
4 – Suitability of graduates to employment and further training	
Suitability to employment	Employment in state and non-state organizations of any form of ownership, where psychological knowledge is relevant. Positions that the master is able to hold: professional titles of works according to SLC 003: 2445.2 psychologists - (1232) "chief psychologist" - (2445.2) "practical psychologist" (1229.7) "Head of psychological, medical and pedagogical consultation"
Further training	Training according to programs: - 8 levels of EQF-LLL; - the third cycle of FQ-EHEA; - 8 levels of HPK .
5 – Teaching and evaluation	
Teaching and learning	Student-centric, problem-oriented learning, initiative self-study. Problem-based, interactive, design, information-computer, self-developing, collective, integrative and contextual learning technologies.
Evaluation	Assessment is carried out in accordance with the "Regulations on the assessment of learning outcomes of students and graduate students" and "Regulations on the organization of the educational process of students."
6 – Program competencies	
Integral competence	Ability to solve complex tasks and problems in the process of learning and professional activity in the field of psychology, which involves research and / or innovation and is characterized by complexity and uncertainty of conditions and requirements.
General competences (GC)	GC1. Ability to apply knowledge in practical situations. GC2. Ability to conduct research at the appropriate level. GC3. Ability to generate new ideas (creativity). GC4. Ability to identify and solve problems. GC5. Appreciation and respect for diversity and multiculturalism. GC6. Ability to act on the basis of ethical considerations (motives). GC7. The ability to act socially responsibly and consciously.

	<p>GC8. Ability to develop and manage projects.</p> <p>GC9. The ability to motivate people and move towards a common goal.</p> <p>GC10. Ability to communicate in a foreign language.</p>
Special (professional, subject) competencies	<p>SC1. Ability to perform theoretical, methodological and empirical analysis of current issues in psychological science and / or practice.</p> <p>SC2. Ability to independently plan, organize and carry out psychological research with elements of scientific novelty and / or practical significance.</p> <p>SC3. Ability to select and apply valid and reliable research methods and / or evidence-based methods and practical techniques.</p> <p>SC4. Ability to carry out practical activities (training, psychotherapy, counseling, psychodiagnostics, etc depending on the specialization) using scientifically verified methods and techniques.</p> <p>SC5. Ability to organize and implement educational activities for different categories of the population in the field of psychology.</p> <p>SC6. Ability to interact effectively with colleagues in mono- and multidisciplinary teams.</p> <p>SK7. Ability to make professional decisions in difficult and unpredictable conditions, to adapt to new situations of professional activity.</p> <p>SC8. Ability to assess the limits of own professional competence and improve professional skills.</p> <p>SC9. Ability to adhere to the norms of professional ethics in professional activities and to be guided by universal values.</p> <p>SK11. Ability to develop and implement innovative methods of psychological assistance to clients in difficult life situations.</p>
7 – Program learning outcomes	
	<p>PR1. Search, process and analyze professionally important knowledge from various sources using modern information and communication technologies.</p> <p>PR2. Be able to organize and conduct psychological research using valid and reliable methods.</p> <p>PR3. Summarize empirical data and formulate theoretical conclusions.</p> <p>PR4. Make a psychological prognosis for the development of individuals, groups, organizations.</p> <p>PR5. Develop programs of psychological interventions (training, psychotherapy, counseling, etc.), conduct them in individual and group work, assess quality.</p> <p>PR6. Develop educational materials and educational programs, implement them, receive feedback, evaluate quality.</p> <p>PR7. Present accessible and reasoned the results of research in written and oral forms, to participate in professional discussions.</p>

	<p>PR8. Assess the complexity of the tasks of the activity and make decisions about seeking help or training.</p> <p>PR9. Solve ethical dilemmas based on the rule of law, ethical principles and universal values.</p> <p>PR12. Carry out an analytical search for scientific information relevant to the formulated problem and evaluate it according to the criteria of adequacy.</p> <p>PR13. Carry out adaptation and modification of existing scientific approaches and methods to specific situations of professional activity.</p>
8 – Resource support for program implementation	
Staffing	<p>Program developers: 2 doctors of sciences, professors, 3 Phds, associate professors. In order to improve the professional level, all scientific and pedagogical workers undergo internships once every five years, including foreign.</p>
Logistics	<p>The basis of material and applied support is a specialized research laboratory of the department for psychophysiological and functional diagnostics with modern equipment: research equipment (electrocardiograph, three-channel ECG, massage chair, bicycle ergometer, dynamometer, pressure gauges, psychophysiological apparatus "Hist"), anatomical and physiological models, relaxation resources).</p> <p>There are specialized computer classes for information retrieval and processing results, where there is specialized software and unlimited open access to the Internet, SMART library.</p> <p>All the necessary social and household infrastructure is available, the number of places in dormitories meets the requirements.</p>
Information and educational and methodical support	<p>The official website https://knute.edu.ua/ contains information about educational programs, educational and scientific activities, structural units, admission rules, information resources of the distance learning system and the Internet.</p> <p>All users registered in KNUTE have unlimited access to the network. Materials of educational and methodical support of the educational and professional program are stated on the educational portal.</p>
9 – Academic mobility	
National credit mobility	<p>Advanced training (internship) of scientific and pedagogical staff in domestic partners of the institution of higher education: Institute of Psychology named by G.S. Kostyuk, NAPS of Ukraine and the Institute of Social and Political Psychology of NAPS of Ukraine.</p>
International credit mobility	<p>Agreements on cooperation between KNTEU and institutions of higher education, within which the partnership exchange and training of students is carried out:</p> <ul style="list-style-type: none"> - University of Clermont-Auvergne (Clermont-Ferrand); - Business School "Audencia" (Nantes);

	<ul style="list-style-type: none"> - University of Grenoble Alps (Grenoble); - University of Paris Est Creteil (Paris); - Paris School of Commerce (ESCP) (Paris); - University of Central Lancashire (Preston); - Krakow University of Economics (Krakow); - Poznan University of Economics and Business (Poznan); - Wroclaw University of Economics (Wroclaw); - University of Hohenheim (Stuttgart); - University of Bremen (Bremen); - Würzburg University of Applied Sciences (Würzburg). <p>Educational institutions with which Erasmus + international projects are implemented:</p> <ul style="list-style-type: none"> - Krakow University of Economics (Krakow); - Szczecin University (Szczecin); - Business School "Audencia" (Nantes); - University of Grenoble Alps (Grenoble); - University of Paris Est Creteil (Paris); - University of Central Lancashire (Preston); - University of Hohenheim (Stuttgart); - Piraeus University of Applied Sciences (Piraeus); - University by Clement of Ohrid (Sofia).
Training of foreign applicants for higher education	<p>Foreign citizens can study at KNUTE for ES "Master" full-time and part-time. Term of study - 1 year 5 months, language of teaching-Ukrainian.</p>

2. List of components of the educational program and their logical sequence

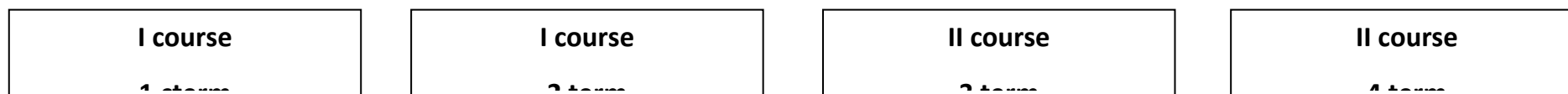
2.1. List of EP components

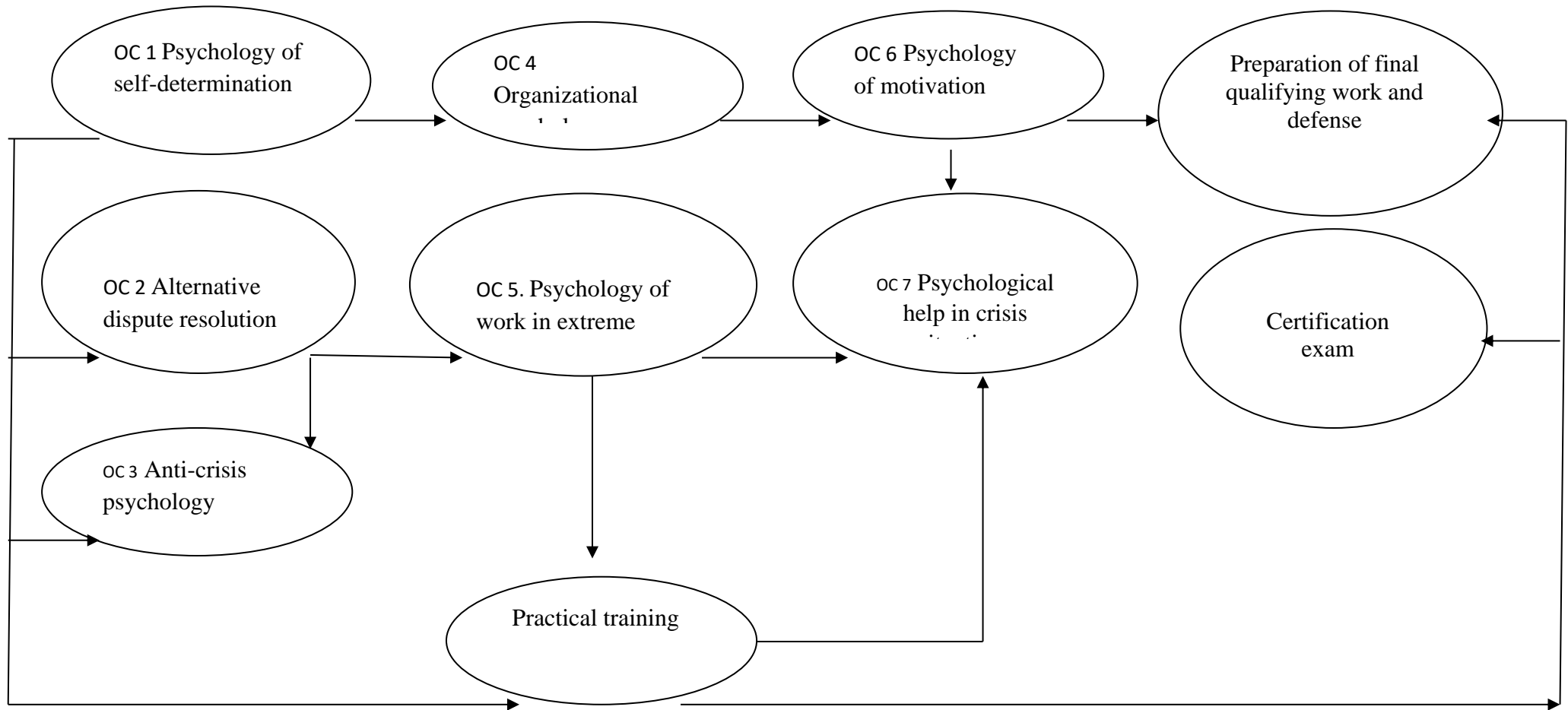
Code of academic discipline	Components of the educational program (disciplines, course projects (works), practices, qualifying exam, final qualifying work)	Number of credits
1	2	3
Obligatory EP components		
OC 1	Psychology of self-determination	6
OC 2	Alternative dispute resolution	6
OC 3	Anti-crisis psychology	6
OC 4	Organizational psychology	7,5
OC 5	Psychology of work in extreme conditions	7,5
OC 6	Psychology of motivation	6
OC 7	Psychological help in crisis situations	6
The total amount of obligatory components:		45
Selective EP components		
SC 1	Security of information systems and networks	6
SC 2	Diagnosis and correction of post-traumatic stress disorder	6
SC 3	Intellectual Property	6
SC 4	Cross-cultural management	6

SC 5	Methodology and organization of scientific research	6
SC 6	Methods of teaching in higher education institutions	6
SC 7	Methodology of socio-psychological training	6
SC8	Fundamentals of sexology and perinatal psychology	6
SC 9	Psychogenetics and psychology of adaptation	6
SC10	Business psychology	6
SC 11	Labor Law	6
The total amount of obligatory components		24
Practical training		
Practical training		9
Certification		
Certification exam		3
Preparation of final qualifying work and defense		9
TOTAL VOLUME OF THE EDUCATIONAL PROGRAM		90

For all components of the educational program, the form of final control is an exam

2.2. Structural and logical scheme of EP





3. Form of certification of applicants for higher education

Certification is carried out in the form of public defense (demonstration) of the final qualifying work.

The final qualifying work involves the independent solution of a complex tasks or complex problem in the field of psychology, which is accompanied by research and the application of innovative approaches and is characterized by uncertainty of conditions and requirements.

There can be no academic plagiarism, fabrication or falsification in the final qualification work.

The final qualifying work should be posted on the website of the higher education institution or its structural unit, or in the repository of the higher education institution.

The attestation exam in the specialty must check the achievement of learning outcomes defined by the Standard of Higher Education and the educational program.

4.1. Matrix of correspondence of program competences to obligatory components of the educational program

Component s Competenc es	OC 1	OC 2	OC 3	OC 4	OC 5	OC 6	OC 7
GC1	+	+	+	+	+	+	+
GC2	+				+		
GC3		+	+	+			+
GC4	+			+	+	+	
GC5	+	+		+			
GC6			+		+		+
GC7	+		+	+		+	+
GC8		+		+	+		
GC9		+				+	+
GC10	+	+			+		
SC1					+		
SC2	+	+		+			
SC3	+			+	+		
SC4			+				+
SC5	+				+	+	
SC6		+		+	+		
SC7	+	+	+				+
SC8			+	+	+	+	+
SC9	+	+	+	+	+	+	+
SC11		+	+		+		+

4.2. Matrix of correspondence of program competences to selective components of the educational program

Components Competences	SC 1	SC 2	SC 3	SC 4	SC 5	SC 6	SC 7	SC 8	SC 9	SC 10	SC 11
GC1		+			+	+	+	+		+	
GC2	+	+			+	+	+				
GC3	+	+			+	+	+	+			
GC4	+				+	+	+				
GC5			+	+						+	+
GC6									+	+	
GC7		+							+		
GC8					+	+	+				
GC9		+					+				
GC10								+			
SC1	+			+	+	+					
SC2		+	+		+	+	+	+	+	+	+
SC3	+	+	+		+	+	+	+	+	+	+
SC4		+					+			+	
SC5			+	+				+	+		+
SC6	+		+	+					+		+
SC7		+					+				
SC8				+	+	+		+			
SC9		+			+		+			+	
SC11		+					+				

5.1. Matrix of providing program learning outcomes with relevant obligatory components of the educational program

Components Program learning outcomes	OC 1	OC 2	OC 3	OC 4	OC 5	OC 6	OC 7
PR1	+	+		+			
PR2	+			+			
PR3		+			+		
PR4		+		+			+
PR5			+		+	+	+
PR6		+	+	+			
PR7			+		+	+	+
PR8	+						
PR9		+				+	+
PR12			+		+		
PR13	+	+		+			

5.2. Matrix of providing program learning outcomes with relevant selective components of the educational program

Components Program learning outcomes	SC 1	SC 2	SC 3	SC 4	SC 5	SC 6	SC 7	SC 8	SC 9	SC 10	SC 11
PR1		+			+		+			+	
PR2		+			+					+	
PR3					+				+		
PR4		+			+		+	+	+	+	
PR5							+	+			
PR6		+				+		+	+	+	
PR7	+	+			+	+	+			+	
PR8		+		+			+			+	
PR9			+	+		+		+			+
PR12	+						+				
PR13		+	+	+	+	+				+	+

